

# Managed Terrestrial Distribution

Open new revenue streams through digital transformation

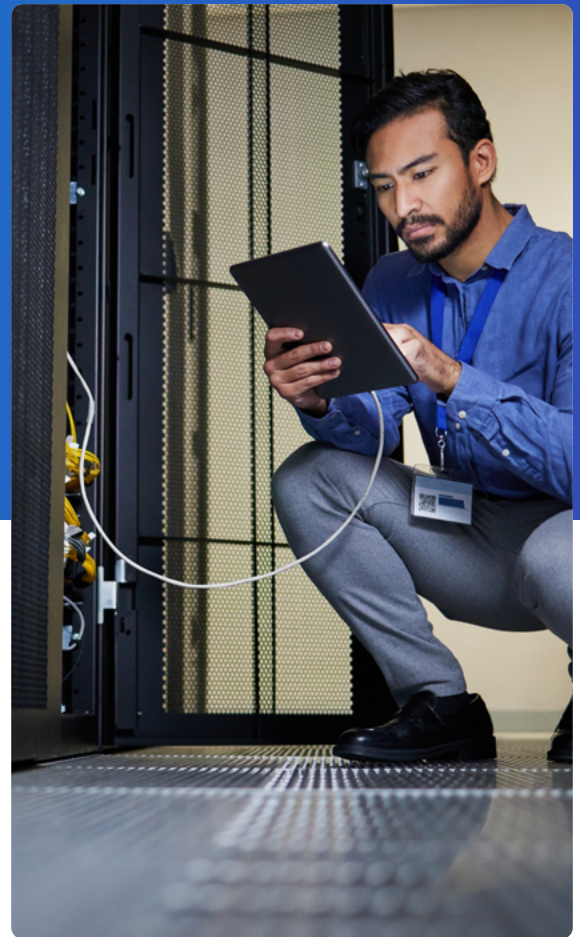
Success in a changing video service marketplace requires continuous improvement. For more than two decades, Comcast Technology Solutions (CTS) has led the way in new technologies for the cable industry. Our solutions provide you with the guidance and technology you need to strengthen your video business while providing a path to IP video.

## Compete in an evolving marketplace

Managed Terrestrial Distribution, part of the Managed Distribution Suite, enables you to decrease costs by reducing headend equipment and related expenses. Recoup a portion of your monthly expenditures on rack space, power, and cooling with the ability to consolidate up to 20 receivers into two servers. Our solution removes the need for an IP direct connection to each programmer and likewise eliminates the IP processing setup fee for each individual feed. Furthermore, you will never be hit with unexpected expenses with technical support already included.

Not only does our solution reduce expenses, but it can also help you ensure your current video revenue and future-proof your business. Managed Terrestrial Distribution provides an expanded channel line-up and other services, resulting in increased customer retention and acquisition. We also help you drive your business forward by providing infrastructure and security — all while lowering your risk.

Leverage what has already been built for millions of Comcast subscribers. CTS' investment in infrastructure allows you to upgrade your technology with minimal upfront capital and access enhancements as they are available. We also have security in hand: All services are encrypted and delivered via proven, reliable technology.



**50% more services**  
with MTD while using less equipment and fewer RUs

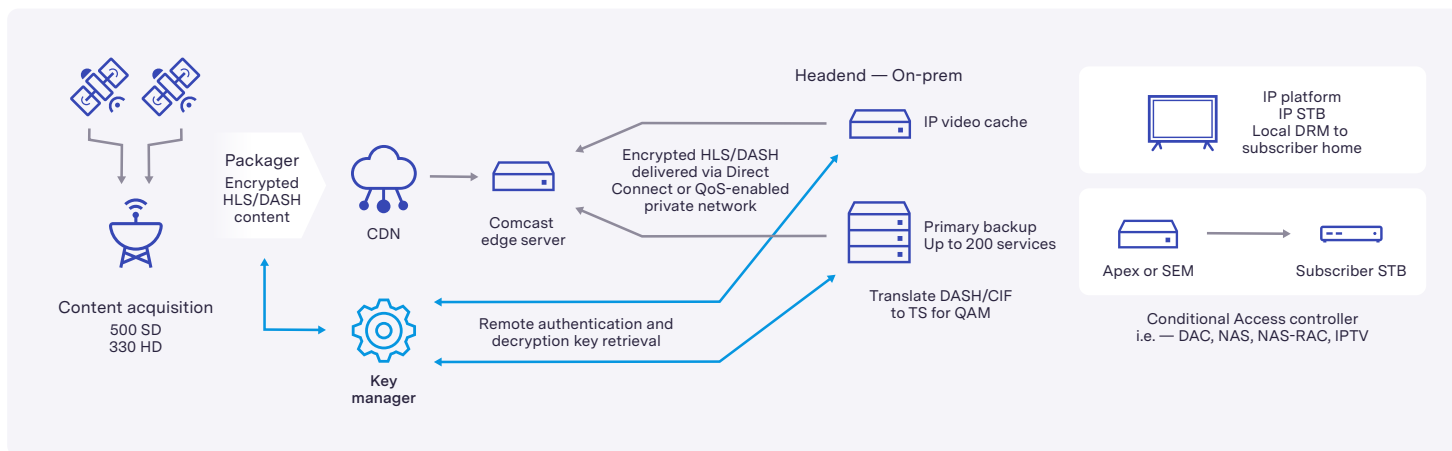


**65% drop in total power consumption**  
for a headend cable system fully utilizing eight XOSs with ~100–150 services



**Improve the reliability of your video acquisition**  
with a fully redundant signal path

## Managed Terrestrial Distribution workflow



### Packaged format

- SD – MPEG-2
- HD – MPEG-4 (all HD services) or MPEG-2 (limited selection)
- Encrypted
- Compatible with QAM and IPTV platforms

### Distribution

- Comcast (CDN)
- Direct connect or broadband network
- ~1G bandwidth

### Compatibility

- Translates HLS/DASH (ideal format for IP video transport/streaming)
- Format on-prem to TS needed for QAM or IPTV

### Equipment

- 2 VPNs
- 2 switches
- 2 HP servers with up to 24 muxes
- 6 RUs
- All equipment provided as part of the service

## Broadcast's new ground game

Built on Comcast's know-how, proven facilities, scalable platforms, and infrastructure, Comcast Technology Solutions (CTS) offers more than 30 years of reliable real-world media and advertising experience. CTS offers a portfolio of technology solutions that provide companies with the technology, scale, and expertise to expand and succeed in rapidly changing global media and entertainment markets.

### Find out more

[www.comcasttechnologysolutions.com](http://www.comcasttechnologysolutions.com)  
[mtd@comcast.com](mailto:mtd@comcast.com)